

380 Peach Point | 5531/C
4,050 sq ft - 2 Story - 4 Beds - 4.5 Baths - Study - Media Room
Unfinished Storage - 3 Car Tandem Garage



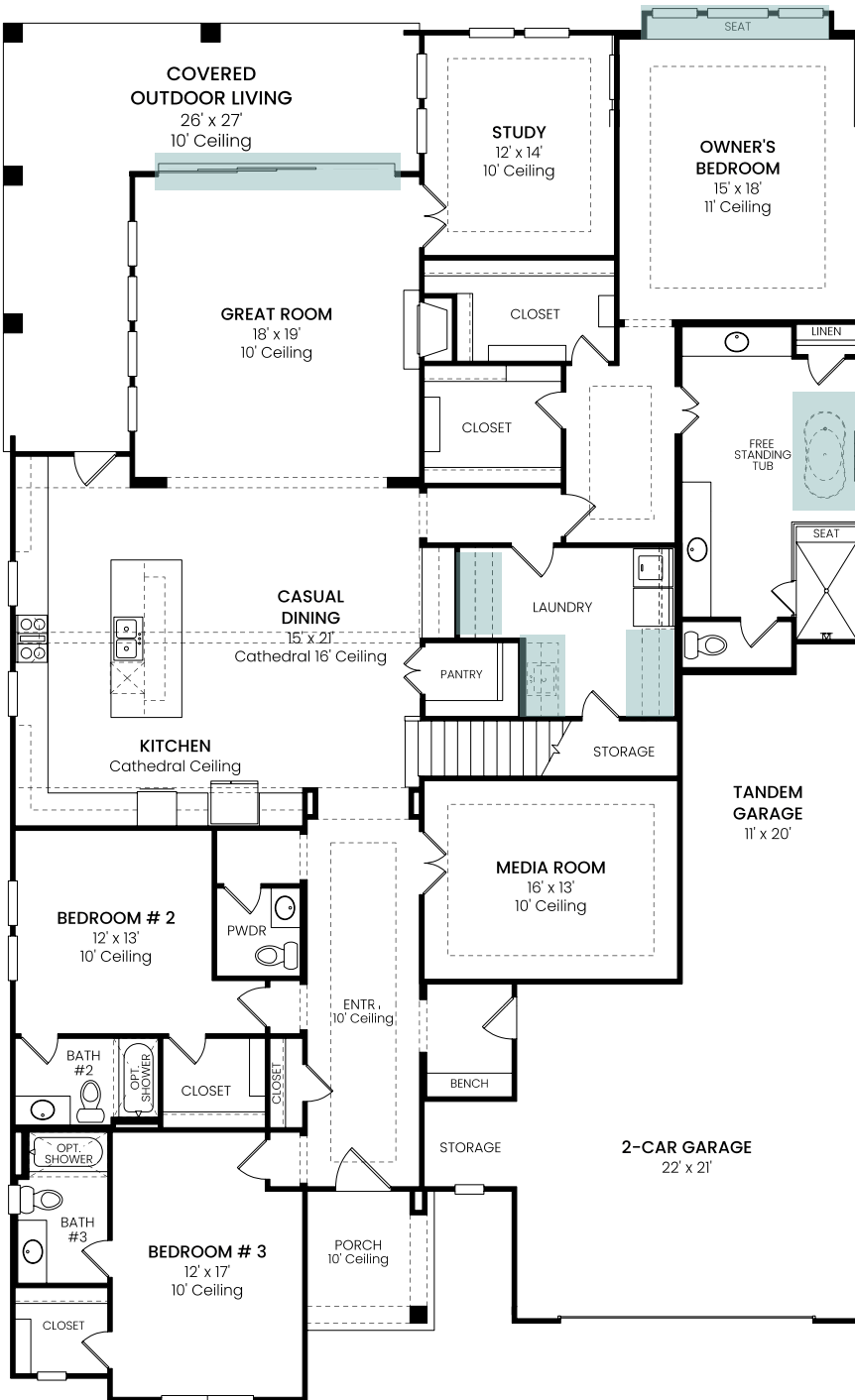
380 Peach Point | 5531/C

4,050 sq ft - 2 Story - 4 Beds - 4.5 Baths - Study - Media Room - Unfinished Storage - 3 Car Tandem Garage

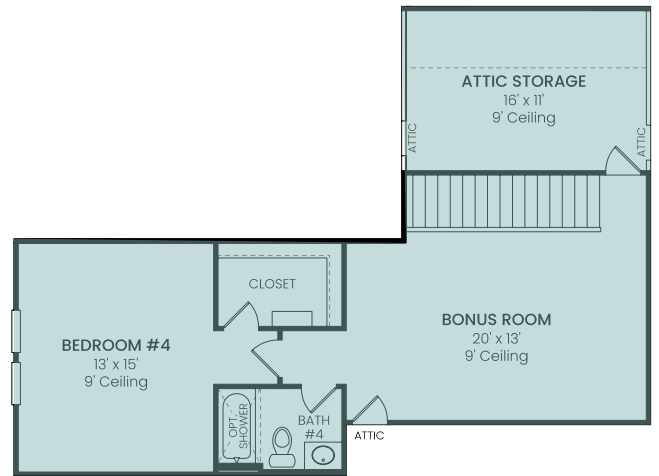
Options Added: Box Window - Sliding Glass Door - Laundry Room Cabinets & Sink - Free Standing Tub

Second Floor Bed #4/Bath #4 - Bonus Room - Unfinished Storage

FIRST FLOOR



SECOND FLOOR



All information is deemed reliable as of publication date but not guaranteed and remains subject to change daily without notice including, but not limited to base price, availability, incentives, floor plans, standard specifications, options, assessments and fees, planned amenities, conceptual artists' renderings and community development plans. Price(s) shown do not reflect lot premiums, upgrades and options. Site maps, elevation renderings and marketing plans are not to scale and all dimensions are approximate. Please see a Community Sales Manager and visit www.traditionhomes.com for details. © 2022, Tradition Homes, LLC. All rights reserved.

The Tradition Continues

TRADITIONHOMES.COM